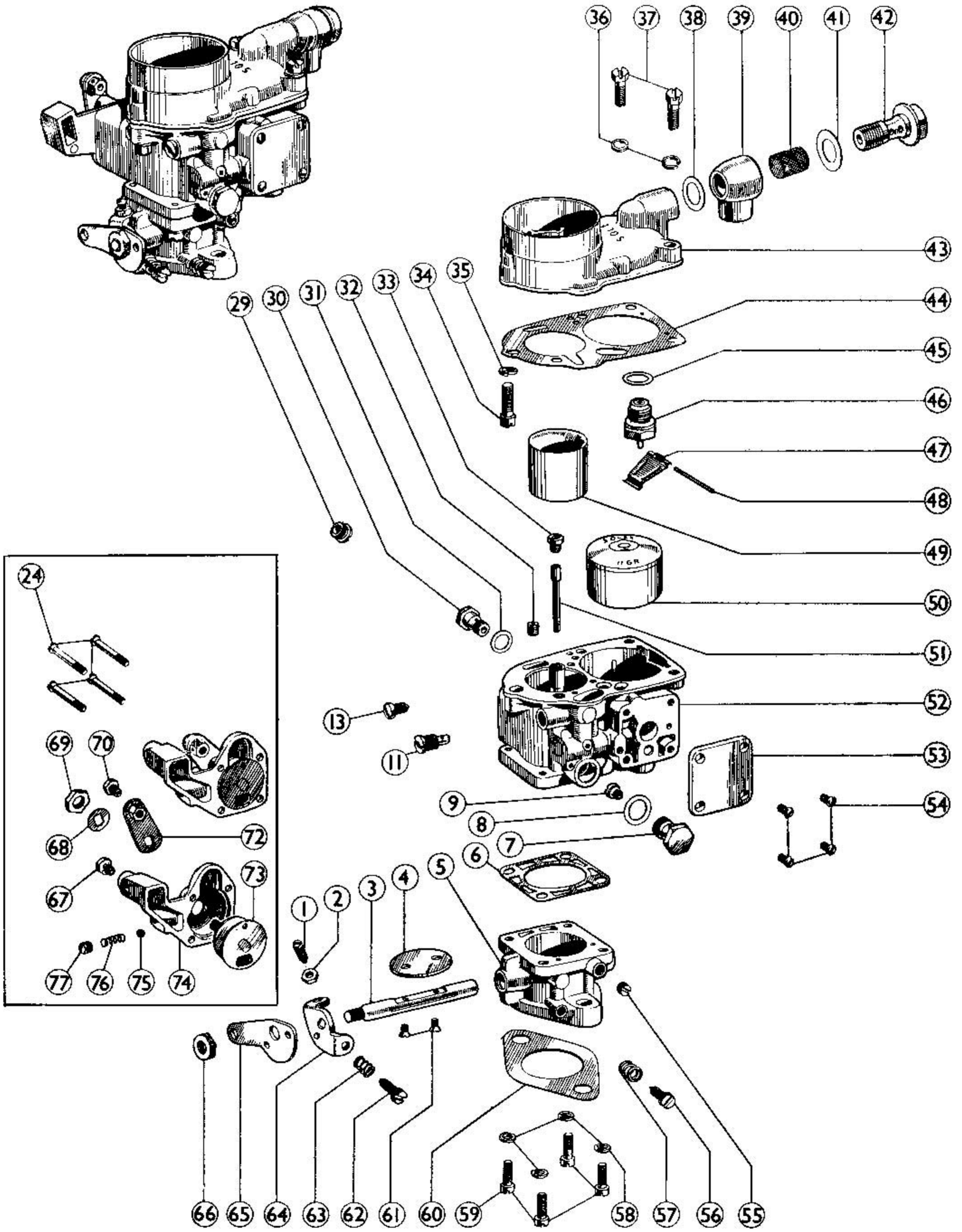


ARNOLT-BRISTOL
32 B1



SPARE PARTS LIST

SECTION **1**

ARNOLT-BRISTOL
32 B1

Item	DESCRIPTION	Part No.	Quantity
1	Throttle stop screw	50537	1
2	Throttle stop screw lock nut . .	3950	1
3	Throttle spindle	50461/L1	1
4	Throttle butterfly	52194	1
5	Throttle chamber only	10566	1
6	Throttle chamber gasket	52788	1
7	Main jet carrier	50820	1
8	Main jet carrier washer	*50815	1
9	Main jet	*50552/6/135	1
11	Pilot jet	*50797/4/50	1
13	Choke tube fixing screw	50362	1
24	Starter body fixing screw	51421/2	4
29	G.A. air jet (starter)	*50906/2.0	1
30	G.S. Petrol jet (starter)	*52823/95	1
31	G.S. petrol jet (washer)	*52825	1
32	Pilot jet air bleed	51274/1/100	1
33	Air correction jet	*51612/240	1
34 & 37	Float chamber assembly screw . . .	2501	3
35 & 36	Float chamber assembly screw washer	971	3
38	Banjo union washer	*4124/1	1
39	Banjo union	4120/18	1
40	Filter Gauze	4123	1
41	Banjo bolt washer	*4124	1
42	Banjo bolt	4122	1
43	Float chamber cover only	9946	1
44	Float chamber cover gasket	*52787	1
45	Needle valve washer	*2261	1
46	Needle valve	*51305/7	1
47	Float toggle	52180	1
48	Float toggle spindle	52204	1
49	Choke tube	52846/28	1
50	Float	*51638/3	1
51	Emulsion tube	52684/1	1
52	Float chamber assembly	10337	1
53	Pump blanking plate	52857	1
54	Pump blanking plate fixing screw . .	3947	4
55	Ignition union	9879	1
	Olive for ignition union	5041	1
56	Volume control screw	*1171	1
57	Volume control screw spring	4384	1
58	Throttle chamber fixing screw washer	901	4
59	Throttle chamber fixing screw	10173	4
60	Flange washer	4453	1
61	Throttle butterfly fixing screw	1129	2
62	Slow running adjustment screw	4023	1
63	Slow running adjustment screw spring	4384	1
64	Throttle spindle abutment plate	4019	1
65	Throttle lever	10291	1
66	Throttle spindle end nut	4024	1
67 & 70	Starter cable swivel screw	51760	2
68	Starter spindle washer	4031/1	1
69	Starter spindle nut	4024	1
72	Starter lever	9862	1
73	Starter valve complete	9942	1
74	Starter body only	52778	1
75	Starter valve locating ball	51728	1
76	Starter valve locating ball spring . . .	51762	1
77	Screw plug	4722	1

CURRENT CARBURETOR SETTING	
Choke Tube	28
Main Jet	135
Air Correction Jet	240
Pilot Jet	50
Starter Air Jets	2.0
Starter Petrol Jet	95
Needle Valve	1.5
Pilot Air Bleed	100
Emulsion Tube	L24 - (Special)

* DENOTES: Normally included in over-haul repair kit.

